



ANELTEC

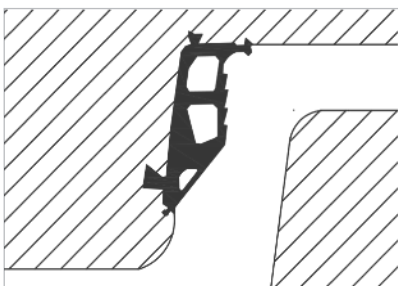
INTEGRATED SEAL GI-29

INTEGRATED SEAL ANELTEC GI-29 the integrated seal intended for shafts.

ANELTEC GI-29 fits the classical manufacturing systems of shafts.

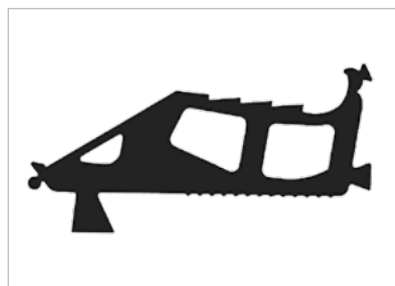
ANELTEC GI-29 is a seal for the female part of concrete and reinforced concrete shafts. It is an integrated seal and shall be assembled during the manufacturing phase of the shaft, by placing it on the cap before the jetting. It needs a particular cap specifically created with a shape that allows the seal to be properly placed. GI-29 is made of EPDM elastomer in accordance with ANELTEC high standards and in compliance with the EN 681-1 European regulations in force.

PRODUCT DETAILS



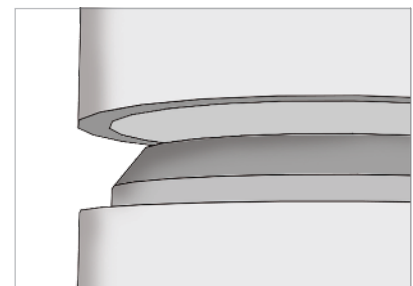
Joint protection

ANELTEC GI-29 coats the internal joint of the shaft female part thus avoiding the accumulation of impurities and the formation of ice in the cavity.



Maximum tightness

Because of the considerable rubber mass, ANELTEC GI-29 ensures an excellent tightness to the shafts.



Quick and safe laying

The wedge-shaped external side of the seal shall be taken as a guide to facilitate the sliding and fixing in the shafts.



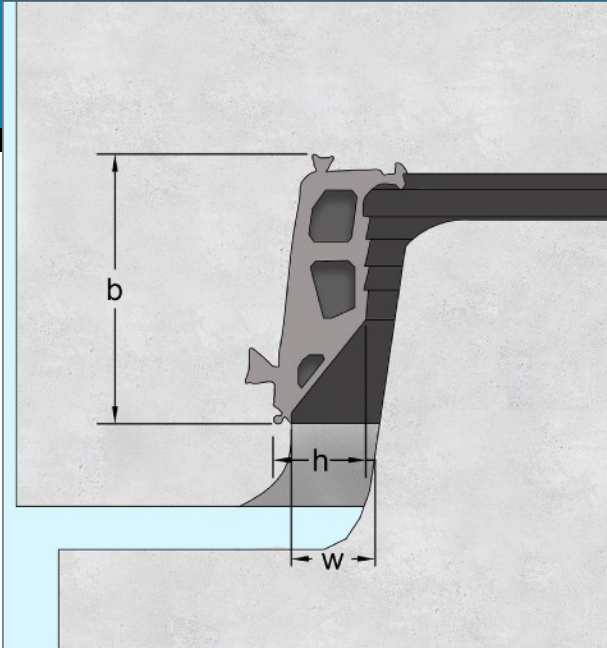
ANELTEC srl

Via Tagiura 10 | 20146 Milano | +39 02 42 23 343 | +39 02 48 95 24 70 (Fax)
info@aneltec.it | www.aneltec.it

EN 681-1



ANELTEC GI-29



- Made of EPDM rubber with hardness 50 ± 5 IRDH, the material is highly resistant to the constant aggression of waste waters.
- It needs a cap specifically intended for this seal type.
- Available in various sizes to always meet any need.

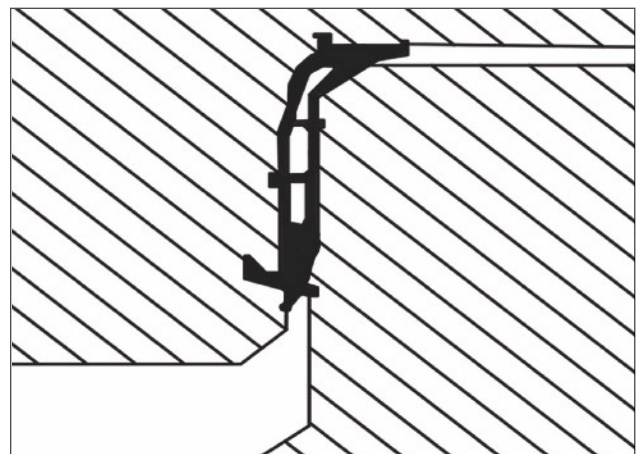
SEAL SIZES

\varnothing - mm	Joint	b	h	w
800,1000	GI-29 18	70,1	18,5 -0,4/+1,2	12,5
1200	GI-29 22	79,3	22,0 -0,4/+1,2	14,3

PIPES ASSEMBLY AND LAYING

The use of ANELTEC lubricant is recommended for the assembly of all our seals.

The assembly and laying of shafts that use ANELTEC GI-25 can be made by means of the typical site equipment in compliance with the EN 1610 regulation. The joint has been devised to easily withstand the stresses developed during the assembly phase so as to avoid fractures and cracking.



ANELTEC srl

Via Tagiura 10 | 20146 Milano | +39 02 42 23 343 | +39 02 48 95 24 70 (Fax)
info@aneltec.it | www.aneltec.it

EN 681-1

